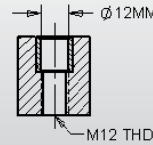


## QLS Tooling Columns

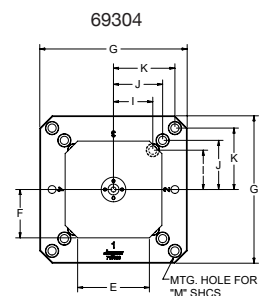
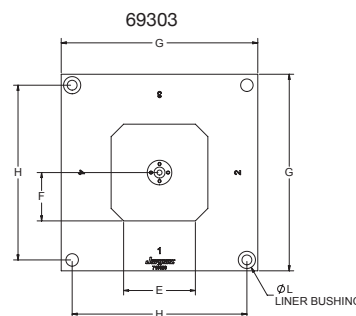
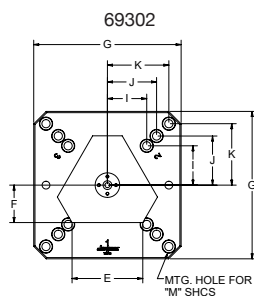
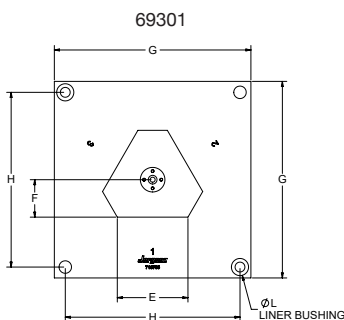
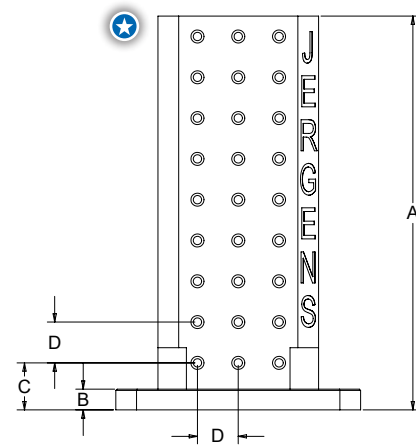
QLS Tooling Columns provide a base mounting platform for utilizing Fixture-Pro or OK Vise RM Rails on HMC's. They feature a lightweight 2-pc aluminum construction.

- **Material:** 6061-T651
- **Finish:** Black Hardcoat Anodize on Upright Faces
- **Includes Pre-Installed QLS Bushings**
- **Custom baseplates are available upon request**



= Jergens QLS

Quick Locating System (QLS) Bushings are hardened and ground for accurate and repeatable setups. Use in combination with 12mm QLS dowel pins or shoulder screws.



Part No.	No. of Sides	A (in)	B (in)	C (in)	D (mm)	E (in)	F (in)	G (mm)	H (in)	I (mm)	J (mm)	K (mm)	L (mm)	M	Weight lbs (kg)
69301	3	19	1	2.27	50	5.66	3	400	14	—	—	—	20	—	85 (39)
69302	3	19	1	2.27	50	5.66	3	300	—	80	100	125	—	5/8" or M16	80 (36)
69303	4	19	1	2.27	50	5.75	3.875	400	14	—	—	—	20	—	125 (57)
69304	4	19	1	2.27	50	5.75	3.875	300	—	80	100	125	—	5/8" or M16	113 (51)

QUICK CHANGE FIXTURING » FIXTURE PRO® MULTI-AXIS QUICK CHANGE FIXTURING